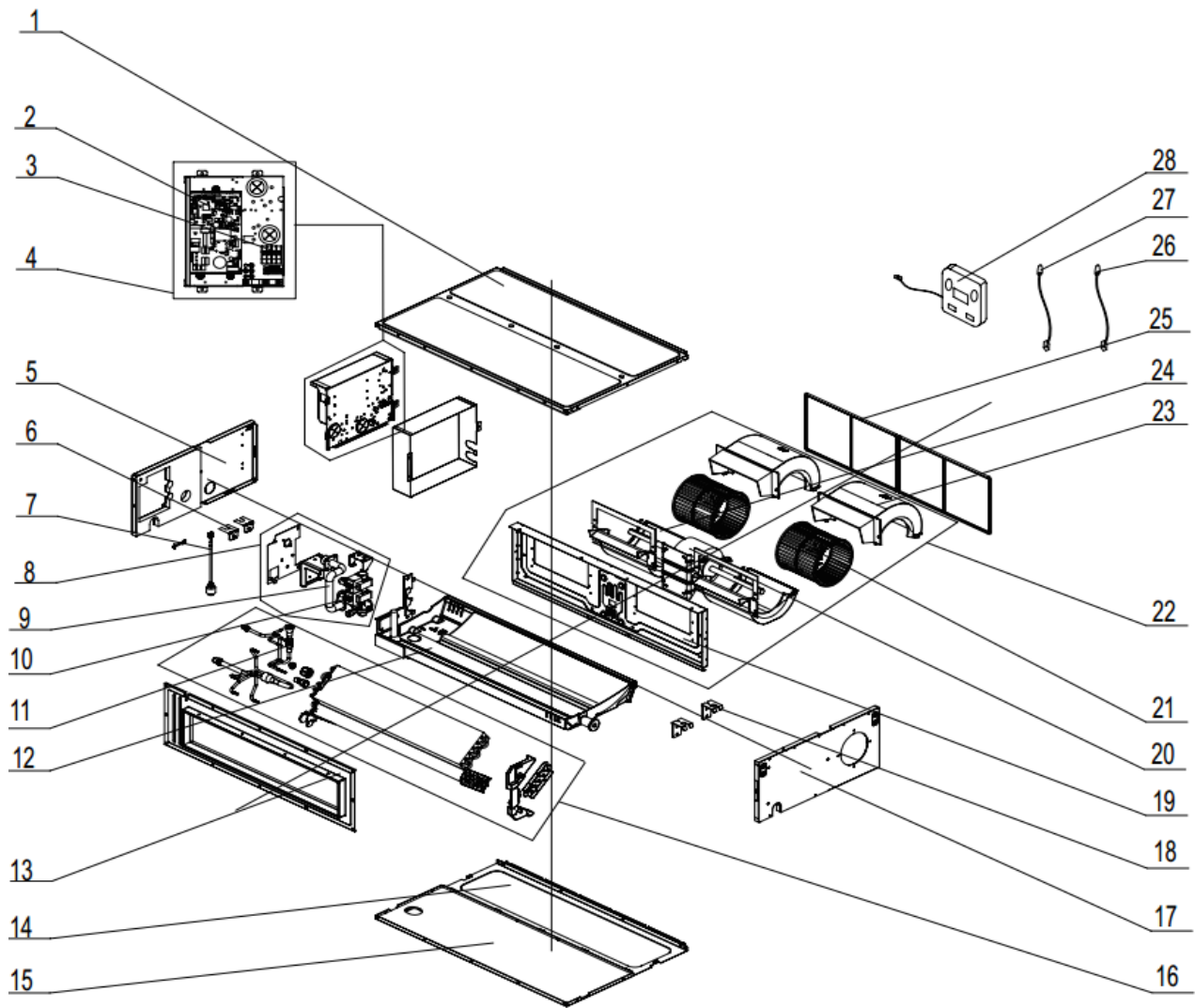


MV-D12BI2



| No | Description | Part Code | Note | Qty | Price Code |
|-------------------------|--------------------------------|----------------|------|-----|------------|
| MODEL: MV-D12BI2 | | | | | |
| 1 | Top Cover Board Assy | 1265200066 | | 1 | |
| 2 | Main Board | 300002061990 | | 1 | |
| 3 | Terminal Board | 42000100000207 | | 1 | AD |
| 4 | Electric Box assy | 100002071508 | | 1 | |
| 5 | Left Side Plate Assy | 80000022 | | 1 | |
| 6 | Hook 2 | 1344100034 | | 4 | |
| 7 | Liquid Level Switch | 430024000005 | | 1 | AH |
| 8 | Water Pump Assy | 104060066 | | 1 | |
| 9 | Drainage Pipe (Rubber) | 760022000001 | | 1 | AK |
| 10 | Water Pump | 81200706001605 | | 1 | |
| 11 | Strainer | 721200102 | | 1 | |
| 12 | Water Tray Assy | 1285200020 | | 1 | AQ |
| 13 | Air Outlet Frame Assy | 1374100057 | | 1 | |
| 14 | Cover Plate(Air return) | 11657000030 | | 1 | AL |
| 15 | Bottom Cover Plate Assy | 1264100102 | | 1 | |
| 16 | Evaporator Assy | 11001000474 | | 1 | |
| 17 | Right Side Plate Assy | 1315200053 | | 1 | |
| 18 | Hook | - | | | |
| 19 | Blower Mounting Plate Sub-Assy | 1325200034 | | 1 | AM |
| 20 | Fan Motor | 1570520106 | | 1 | |
| 21 | Centrifugal fan | 10425200003 | | 2 | AH |
| 22 | Centrifugal fan Assy | 52060176 | | 1 | |
| 23 | Propeller Housing(Upper) | 26905200018 | | 2 | AF |
| 24 | Propeller Housing(Lower) | 26905200019 | | 2 | AE |
| 25 | Filter Sub-Assy | 111001000082 | | 2 | AH |
| 26 | Temperature Sensor | 390000597 | | 1 | AD |
| 27 | Ambient Temperature Sensor | 390000453 | | 1 | AD |
| 28 | Display Board | 300001060893 | | 1 | AX |
| | | | | | |
| | | | | | |

The data are subject to change without notice.